

SYNERGY HORN FULL RANGE LOUDSPEAKERS

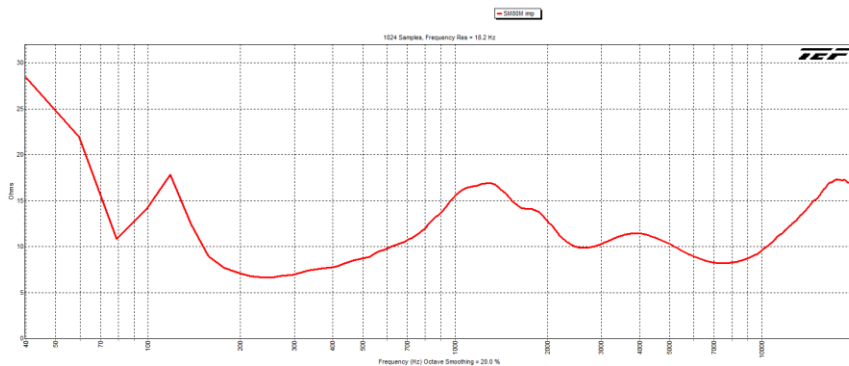
The SM80M is Danley's answer for those that are looking for the ultimate floor monitor. It is switchable between passive and biamped operation. The large horn provides significant forward directivity thus keeping the sound on the stage and not bleeding back into the first few rows of the audience.

It has two angles of operation with dual input/output connections on each side-reducing cable clutter.

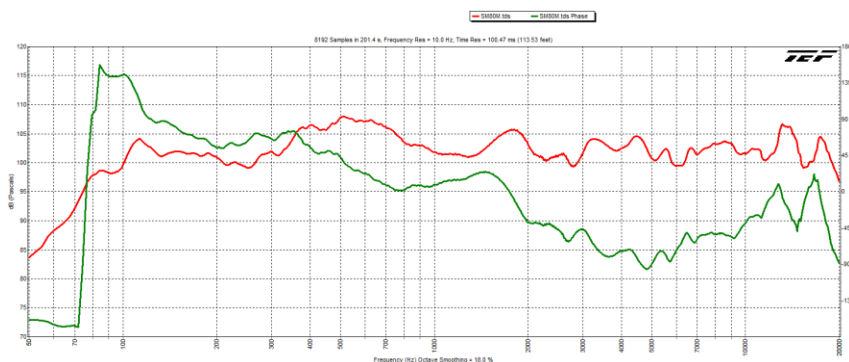
Specifications

Coverage Pattern 80° conical
 Operating Frequency Range 86Hz- 19KHz +/-3dB
 70Hz- 20KHz -10dB
 Sensitivity.....102dB SPL
Maximum Output128dB SPL Cont., 134 dB SPL Program
 Recommended Amplifier Power:
 400 watts continuous, 1600 watts peak
 Nominal Impedance.....8 ohms
 Minimum Impedance.....6.6 ohms @ 254Hz
 Recommended Processing..... 80 Hz High Pass 24dB Butterworth
 Drivers..... 1-12"/1-1.4" HF coaxial
 Input Connections..... NL4
 Enclosure Material..... 18mm Baltic Birch, polyurea coated

SM80M imp
 4/12/2013 4:06:52 PM

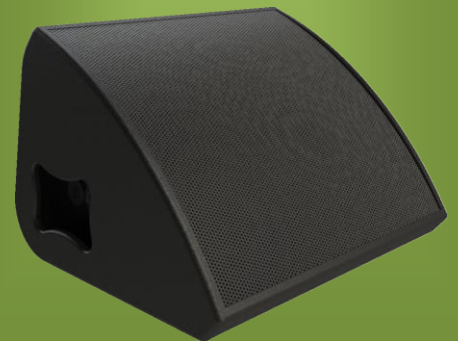


SM80M
 1/24/2013 11:06:20 AM



SM80M

Huge output and forward directivity keeping the sound on stage and not into the first few rows of the audience.



Accessories

Touring Cover

PERFORMANCE DATA

Model	Max SPL	Sensitivity	Magnitude Response	Beam Width	Power Rating	Dimensions (in.)	Weight
SM80-M	134 dB	102dB	86 Hz – 19kHz	80° Conical	1600 watts peak	25.5"H x 24"W x 12.75"D	50 lbs

Architect/Engineers Specs

The loudspeaker shall utilize the Synergy Horn patent-pending enclosure. The coverage pattern shall be 80° conical. The loudspeaker shall have an operating range of +/- 3 dB 86 Hz – 19 kHz. Sensitivity of 102 dBSPL @ 1m. Output of 128dBSPL/134 dBSPL Peak. Power handling shall be 400 Watts continuous program.

The loudspeaker shall be constructed of 18mm Baltic birch, water resistant Polyurea coated, properly braced for the intended use and a rugged steel grill. The Loudspeaker shall be the Danley Sound Labs SM80-M.