

SYNERGY HORN FULL RANGE LOUDSPEAKERS

The SM-60F combines great fidelity, low frequency pattern control and unrivaled Magnitude/phase response into an ultra-compact enclosure. It has the added benefit of truly modular array-ability.

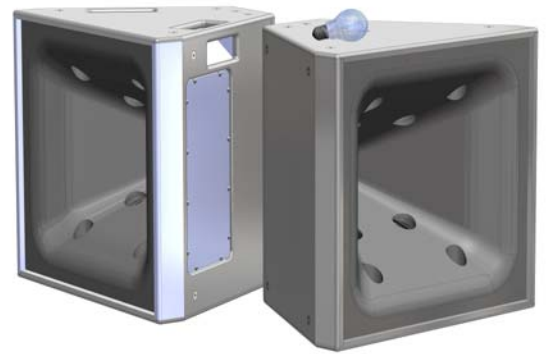
Available in both Touring and Install versions - touring version comes with handles to make it easily transportable.

Specifications

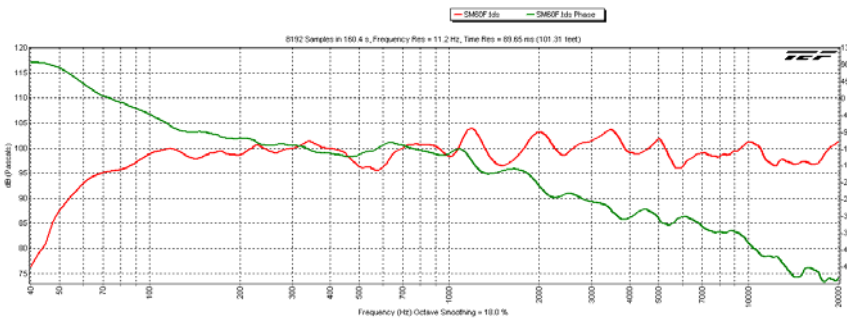
Coverage Pattern 60° horizontal x 60° vertical
 Operating Frequency Range.....66 Hz - 24 kHz +/- 4 dB
 52 Hz – 26 kHz -10 dB
 Sensitivity @ 1M 99 dBSPL
(Measured as 2.83V input, 1M whole space)
 Maximum Output.....125 dBSPL Cont.,131 dBSPL Program
 Input Power Ratings 800W continuous, 1600W program
 Nominal Impedance4 ohms
 Minimum Impedance..... 3.4 ohms @ 150 Hz
 Recommended Processing 50 Hz HP @ 24 dB/Butterworth
 Drivers LF 2 x 8", MHF 1 x 5" Coaxial
 Input Connections 2-NL4MP
 Enclosure Material 13ply, 18mm Baltic Birch, polyurea coated

SM-60F

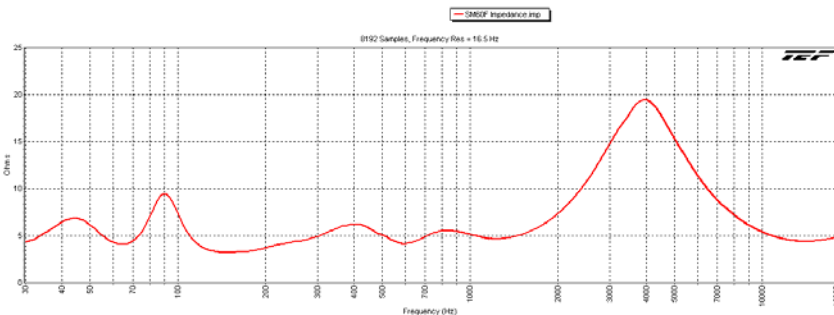
Synergy Horn
 Performance in an
 Ultra-Compact Box



SM60F
 3/24/2010 12:39:50 PM outdoors



SM60F Impedance
 outdoors 3/23/2010 4:04:36 PM



Applications

- Houses of worship
- Commercial theatre sound
- Live music venues
- Performing arts centers
- Discos
- High end home theatres

Accessories

- Powered version available
- Mounting brackets for array
- MB 50 Fly-ware
- Speaker Cover
- Weatherized options available

PERFORMANCE DATA

Model	Max SPL	Sensitivity	Magnitude Response	Beam Width	Power Rating	Dimensions (in.)	Weight
SM 60F	131 dB	99 dB	66 Hz – 24 kHz	60° x 60°	1,600 W	20.6 x 20.6 x 16.3	50 lbs

Architect/Engineers Specs

The loudspeaker shall utilize the synergy Horn/Tapped Horn patent-pending enclosure covering three pass bands. The coverage pattern shall be 60° horizontal x 60° vertical. The loudspeaker shall have an operating range of +/- 4 dB 66 Hz – 24 kHz. Sensitivity of 99 dBSPL @ 1m. Output of 125 dBSPL/131 dBSPL Peak. Power handling shall be 800 Watts continuous, 1600 Watts program. The impedance shall be nominal 4 ohms.

The loudspeaker shall be constructed of 13 ply Baltic birch, water resistant Polyurea coated, properly braced for the intended use and a rugged steel grill. The connectors shall be Neutrik NL4. The Loudspeaker shall be the Danley Sound Labs SM-60F.