

## SYNERGY HORN FULL RANGE LOUDSPEAKERS

The **OS80** is Danley's answer for those that are looking for a high performance speaker in an outdoor enclosure impervious to weather. A single cabinet can produce high quality audio beyond 130dB from a compact full range Synergy Horn that weighs only 51lbs. A heavy duty aluminum mounting bracket and angle strap is included.

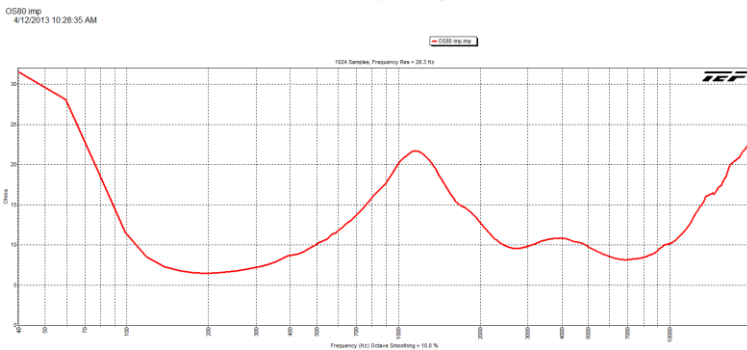
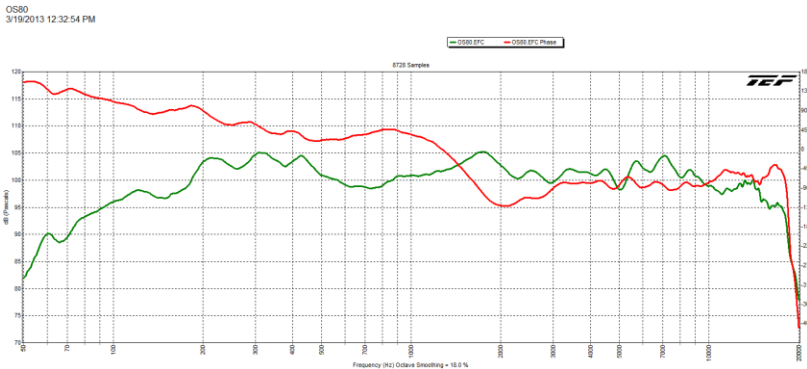
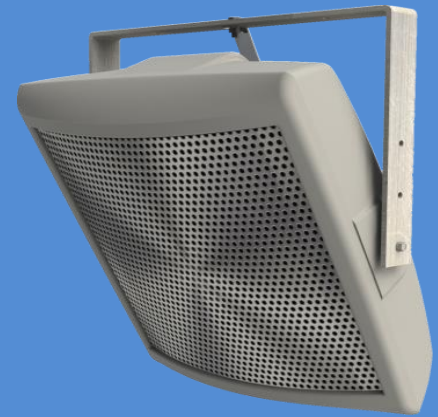
**APPLICATIONS** can include any outdoor location such as sports venues, arenas, athletic fields and complexes, theme and recreational parks, public gatherings, race tracks, community centers, cruise ships, hockey rinks, electronic carillons, water parks, and swimming areas.

### Specifications

**Coverage Pattern** .....80° conical  
**Operating Frequency Range**.....113 Hz – 18 kHz +/- 3 dB  
 .....70Hz – 19 kHz -10 dB  
**Maximum Output** .....127dB SPL Cont., 133 dB SPL Program  
**Recommended Amplifier Power:** .....400 watts continuous, 1600 watts peak  
**Nominal Impedance** .....8 ohms  
**Recommended Processing** .....67Hz 24dB Butterworth  
**Drivers**.....1-12"/1-1.4"HF coaxial  
**Input Connections**.....Gland nut, pigtail  
**Enclosure Material** .....Thermal molded Poly-composite

# OS80

High output, high fidelity, fully weatherized outdoor speaker



### PERFORMANCE DATA

Model	Max SPL	Sensitivity	Magnitude Response	Beam Width	Power Rating	Dimensions (in.)	Weight
OS80	133 dB	101dB	70Hz – 19kHz	80° Conical	1600 Watts	32.25"H x 26"W x 14.5"D	51lbs

### **Architect/Engineers Specs**

The loudspeaker shall utilize the Synergy Horn patented enclosure. The coverage pattern shall be 80° conical. The loudspeaker shall have an operating range of +/- 3 dB 113 Hz – 18 kHz. Sensitivity of 101 dB SPL @ 1m. Output of 127dB SPL/133 dB SPL Peak. Power handling shall be 400 Watts continuous, 800 Watts program.

The loudspeaker shall be constructed of thermal molded poly composite, with an aluminum grill. The Loudspeaker shall be the Danley Sound Labs OS80.