

## OUTDOOR SERIES LOUDSPEAKERS

The **OS115** is Danley's answer for those that are looking for a high performance speaker in an outdoor enclosure impervious to weather. A single cabinet can produce high quality audio beyond 130dB from a compact low frequency horn that weighs only 80lbs. A heavy duty aluminum mounting bracket and angle strap is included.

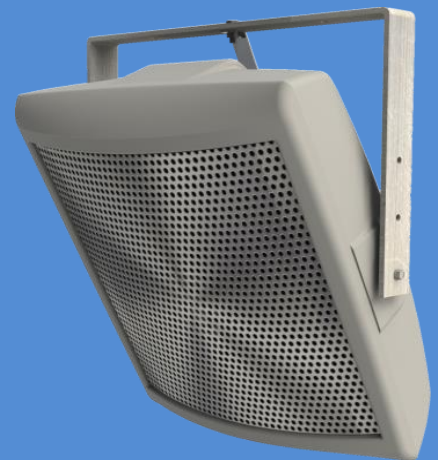
**APPLICATIONS** can include any outdoor location such as sports venues, arenas, athletic fields and complexes, theme and recreational parks, public gatherings, race tracks, community centers, cruise ships, hockey rinks, electronic carillons, water parks, and swimming areas.

### Specifications

Operating Frequency Range .....53 Hz -600 Hz - 3 dB  
 ..... 45 Hz – 800 Hz -10dB  
 Sensitivity @ 1M..... 99 dB SPL  
 .....(Referenced to 2.83V @1M ½ space, measured as 28.3V @ 10M)  
 Maximum Output ..... 129 dB SPL/135 dB SPL Peak  
 Input Power Ratings..... 1000 W continuous, 4000 W Peak  
 Nominal Impedance ..... 4 ohms  
 Recommended Processing ..... 40 Hz HP @ 24 dB/Butterworth  
 Drivers.....LF 1 x 15"  
 Input Connections ..... 1-Glandnut, pigtail  
 Enclosure Material ..... Thermal molded Poly-composite

# OS115

High output, high fidelity, fully weatherized outdoor speaker



Model	Max SPL	Sensitivity	Magnitude Response	Power Rating	Dimensions (in.)	Weight
OS115	135 dB	99dB	53Hz – 600Hz	2000 Watts	32.25"H x 26"W x 14.5"D	80lbs

### **Architect/Engineers Specs**

The loudspeaker shall utilize the Tapped Horn patented enclosure. The coverage pattern shall be omnidirectional. The loudspeaker shall have an operating range of +/- 3 dB 53 Hz – 600 Hz. Sensitivity of 99 dB SPL @ 1m. Output of 125dB SPL/130 dB SPL Peak. Power handling shall be 1000 Watts continuous, 2000 Watts program. The loudspeaker shall be constructed of thermal molded poly composite, with an aluminum grill. The Loudspeaker shall be the Danley Sound Labs OS115.