

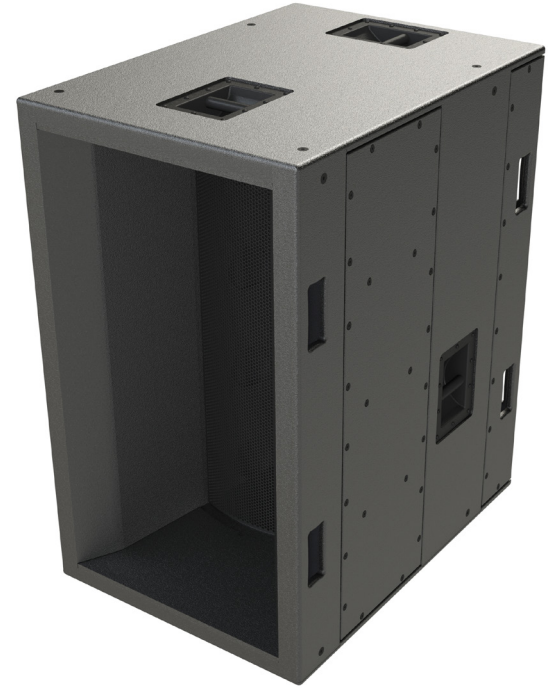


# J6-42 Full Range Loudspeaker

## KEY FEATURES:

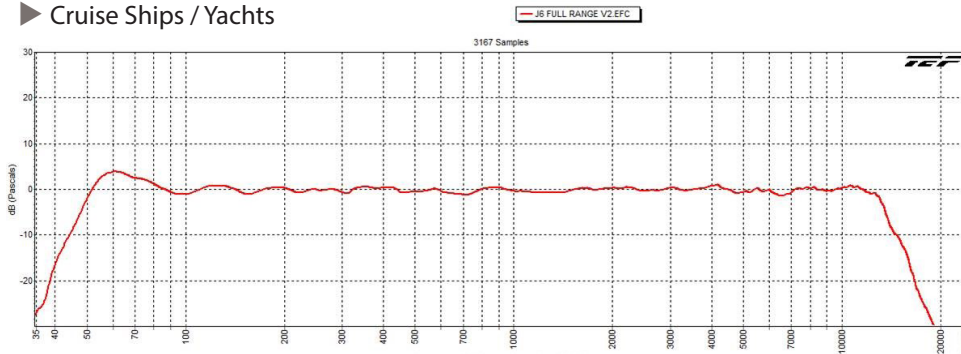
- ▶ Incredible Output to Size/Weight/Price Ratio
- ▶ Narrow coverage pattern
- ▶ Synergy crossover design
- ▶ Sentinel™ Limiter protection circuitry

The J6-42 combines high fidelity and loudness in the form of a long throw, full range loudspeaker. An improved version of the paraline combiner allows for the summation of eight high frequency drivers while maintaining seamless phase alignment of all 24 speakers. The cabinet is equipped with rigorously tested speakers to insure longevity during continuous output. Sturdy and vibration resistant 18 mm birch is the wood of choice in all Danley cabinets in the Jericho line. The polyurea outer shell has a unique professional appearance while protecting against temporary adverse conditions. A weatherized option includes a full coating of fiberglass resin under a UV resistant polyurea coating. Handles are located in strategic locations on five sides of the J6-42.



## APPLICATIONS:

- ▶ Sports Facilities
- ▶ Theme Parks
- ▶ Cruise Ships / Yachts



Operating Frequency Range	-----	49Hz-13.2KHz	- 3dB
	-----	44Hz- 14.6KHz	- 10dB
Coverage Pattern	-----	40° x 20°	
Sensitivity	-----	114 High, 113 Mid, 114 Low - SPL measured at 1M @ 2.83V input	
Maximum Output	-----	148 dB SPL Cont., 154 dB SPL Peak	
Recommended Amplifier Power:	-----	High-1600 W, Mid-3200 W, 2 x Low-5600 W	
Impedance	-----	High-4 Ohm, Mid-4 Ohm, Low-2 x 4 Ohm	
Recommended Processing	-----	OEM Presets in DNA Series	
Drivers	-----	8 x 1.4" High, 8 x 6.5" Mid, 8 x 10" Low	
Input Connections	-----	NL8	
Enclosure Material	-----	18 mm Baltic Birch, Polyurea Coated	
Weight	-----	500 lbs	
Dimensions	-----	44.25"H x 26"W x 36"D	



# J3-94 Full Range Loudspeaker

## ARCHITECT/ENGINEERS SPECS

The loudspeaker shall utilize the Synergy patented crossover network. The coverage pattern shall be 40° horizontal 20° vertical. Sensitivity of 113 dB SPL (measured at 1M @ 2.83V input). Output of 151 dB SPL Program/154 dB SPL Peak. Power handling shall be High-1600 W, Mid-3200 W, 2 x Low-5600 W program. The loudspeaker shall be constructed of 18 mm Baltic Birch, Polyurea Coated. The Loudspeaker shall be the Danley Sound Labs J6-42.

