

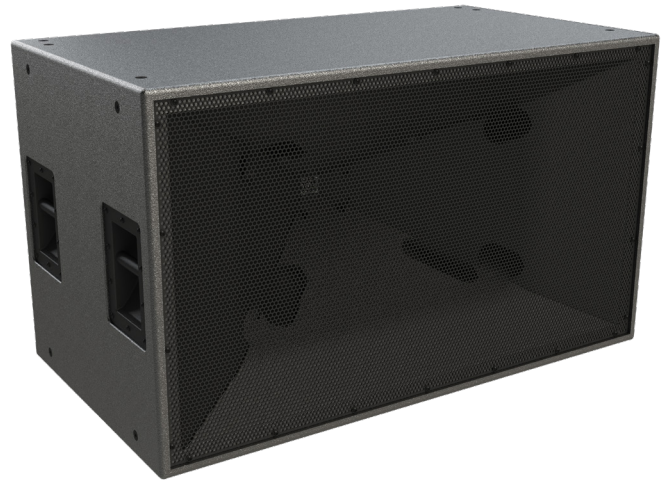


# SH96HO Loudspeaker

## KEY FEATURES:

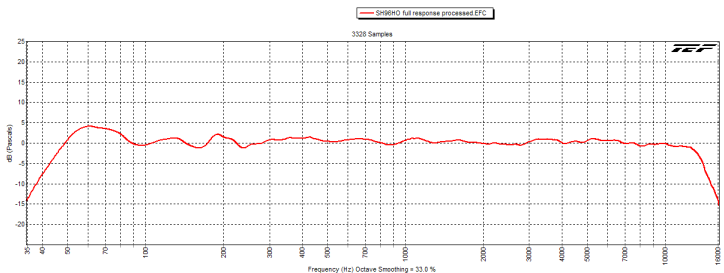
- ▶ Synergy Horn Technology
- ▶ 11 horn loaded drivers
- ▶ 90 x 60 degree coverage
- ▶ Bi-amped Only Operation

The SH96HO is a 3-way loudspeaker design housing 4 x 15" LF drivers, 6 x 4" MF drivers and 1 x 1.4" exit HF compression driver, all mounted within a 45" x 26" horn. Driver placement within the horn, in unison with a synergy crossover network, allow for proper phase alignment between frequency bands. This permits the physically separated bands to combine and emerge from the horn in synchrony, greatly reducing off axis distortions in frequency response, allowing for greater clarity at long distances. Furthermore, out of band harmonic distortion is reduced by the use of acoustic low pass filters on the lows and mids.



The 13 ply Baltic Birch used throughout the enclosure is encased in Polyurea for protection from impact and atmospheric conditions, and a strengthened outdoor finish is available for long term exposure to rain and sunlight. Install and touring versions of the SH96HO's are equipped with eighteen 3/8" rig points; however, touring models also include built on casters and six handles for easy movement.

SH96HO full response processed  
8/18/2019 10:52:05 PM



Operating Frequency Range \_\_\_\_\_ 45Hz - 13.5KHz -3dB  
 \_\_\_\_\_ 38Hz - 15KHz - 10dB

Coverage Pattern \_\_\_\_\_ 90 x 60

Sensitivity \_\_\_\_\_ 105dB (measured as 2.83V @1m distance)

Maximum Output \_\_\_\_\_ 133dB SPL Cont. | 139dB SPL Peak

M Noise \_\_\_\_\_ 134dB SPL Cont. | 147dB SPL Peak

Power Handling \_\_\_\_\_ Low 2800 Watts Cont., 11,200 Watts Peak  
 \_\_\_\_\_ M/H 800 Watts Cont. 3,200 Watts Peak

Recomended Power Amp \_\_\_\_\_ DNA 20K4 Pro

Impedance \_\_\_\_\_ Low 2 or 8 Ohm selectable | M/H 4 Ohm

Drivers \_\_\_\_\_ Low 4x15", Mid 6x 4", High 1x1.4"

Input Connections \_\_\_\_\_ 2x NL4

Enclosure Material \_\_\_\_\_ 18mm Baltic Birch, polyurea coated

Weight \_\_\_\_\_ 220 lbs

Dimensions \_\_\_\_\_ 26.5 x 45 x 25 in. / 67.31 x 114.3 x 63.5 cm.



# SH96HO Loudspeaker

## ARCHITECT/ENGINEERS SPECS

The loudspeaker shall utilize 4 - 15" woofers, 6 - 4" mid frequency drivers and 1 x 1.4" high frequency driver in a single enclosure. The coverage pattern shall be 90° horizontal x 60° vertical. The loudspeaker shall have an operating range of +/- 3 dB 45 Hz - 13.5 kHz. Sensitivity of 105 dB SPL @ 1m. Output of 133 dB SPL/139 dB SPL Peak. Power handling shall be 2800 Watts continuous LF, 800 Watts continuous Mid/High. The impedance shall be selectable 2 or 8 ohms. The loudspeaker shall be constructed of 13 ply Baltic birch, water resistant Polyurea coated, properly braced for the intended use and a rugged steel grill. The connectors shall be Neutrik NL4. The Loudspeaker shall be the Danley Sound Labs SH96HO.

