



# BC215 Subwoofer

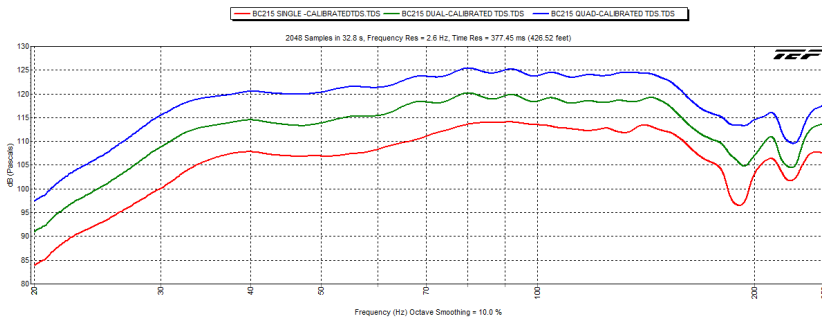
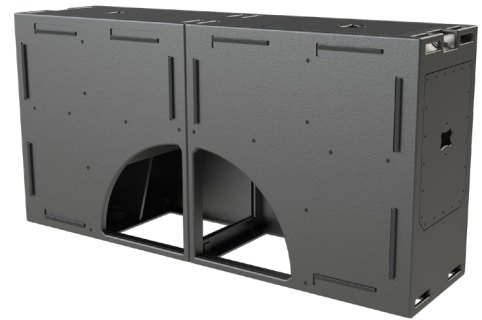
## KEY FEATURES:

- ▶ Boundary Coupled Technology
- ▶ Polyurea Finish
- ▶ Multiple Configurations

## APPLICATIONS:

- ▶ Nightclubs
- ▶ Concert Venues
- ▶ Outdoor Concerts
- ▶ Sports Facilities
- ▶ Athletic complexes

The BC215 is the newest member of the BC family of subwoofers from Danley Sound Labs. Designed to be the most compact subwoofer in the BC family the BC215 utilizes 2 powerful 15" drivers. The BC or Boundary Coupled subwoofer is a new class of subwoofer, delivering not only high efficiency and power handling but actual directivity. The BC215 is designed to be deployed in clusters of two or four, with the exits coupled together.



Operating Frequency Range	----- 33Hz -180Hz -3dB
	-----28Hz - 185Hz -10dB
Sensitivity	----- 108dB (measured as 2.83V referenced to 1m by 28.3V @10m distance)
Maximum Output	----- 137 dB SPL Cont., 143 dB SPL Peak
Power Handling	-----3400 Watts Cont.,13,600 Watts Peak
Recommended Amplifier Power	----- 3400 Watts
Impedance	----- 2 Ohm
Recommended Processing	----- 30 Hz high pass @ 24 dB / Butterworth
Drivers	----- 2x 15" Woofer
Input Connections	----- 2x NL4
Enclosure Material	----- 13 ply, 18mm Baltic Birch, polyurea coated
Weight	----- 360lbs
Dimensions	-----45" x 45" x 24"

## ARCHITECT/ENGINEERS SPECS

The subwoofer shall utilize the Boundary Coupled enclosure. The coverage pattern shall be omnidirectional. The subwoofer shall have an operating range of 28Hz -185Hz -10dB. Sensitivity of 108 dB SPL (measured at 2.83V referenced to 1m by 28.3V @10m distance). Output of 137 dB SPL Program/143 dB SPL Peak. Power handling shall be 3400 Watts cont. or 13,600 Watts peak. The subwoofer shall be constructed of 13 ply, 18mm Baltic Birch, polyurea coated. The subwoofer shall be the Danley Sound Labs BC215.

