

# TH112

## Tapped Horn Subwoofer



The TH112 is a compact subwoofer utilizing (1) x 12" long excursion LF driver in a Tapped Horn™ alignment. The Danley Tapped Horn Subwoofer™ is a patented design which allows us to build physically small subs which are very efficient, especially at the low end of their range, and are virtually linear in their passband. The Tapped Horn™ design takes full advantage of the driver element by doubling its output ability. The result is more output from less input. Subjectively the TH series produce very deep bass from generally very small boxes.

The 13 ply Baltic Birch used throughout the enclosure is encased in PolyUrea for protection from impact and atmospheric conditions. Install and touring versions are both equipped with multiple M10 rig points. Our EW (Extreme Weather) variant offers the ultimate in protection from the elements due to the use of high-density polyurethane panels impregnated with fiberglass fibers in the place of standard plywood.

Utilize our DNA amplifiers or processor for maximum performance and protection with industry leading DSP capabilities.

### Performance Specifications

#### Operating Mode

Single channel amplified

#### Operating Range

33 Hz - 200 Hz -3dB

27 Hz - 260 Hz - 10dB

#### Coverage Pattern

Omni-directional

#### Transducers

1x12"

#### Power Handling

400 W Cont. | 1200 W Peak

#### Sensitivity

measured as 28.3V @10m distance

100 dB

#### Maximum SPL (continuous | peak)

126 dB | 132 dB @38 Hz      133 dB | 139 dB @84 Hz

#### M Noise

Coming soon

#### Impedance

1x8 Ohm

#### Recommended Power Amplifier

1x ~800 Watts @ 8 Ohm

### Physical Specifications

#### Connections (TH112-T | TH112-I)

(2) Neutrik NL4 Speakon wired in Parallel

Pin 1+/- | 8 Ohm Single Channel

Pin 2+/- | Pass Through

#### Connections (TH112-I-EW | TH112-I-AT)

1x 2 Conductor 14 Gauge Lead-in Wire

#### Mounting / Suspension Points

M10 -1.5

#### Dimensions / Weight

38 x 18 x 30.2 in. | 965 x 457 x 770 mm.

142 Lbs | 64.5 Kg

#### Finish

B-Black polyurea enclosure w/ matte black grille

White polyurea enclosure w/ matte white grille

Grey UV resistant painted enclosure w/ matte grey grille

#### Enclosure Material

18mm Baltic Birch, polyurea coated

#### Options

TH112-I-G-EW      Install Version, Extreme Weather

TH112-I            Install Version

TH112-T-B-K      Touring Version w/ 3 Pole Cups

TH112-T-B-KM20      Touring Version w/ 3 M20 Pole Mounts

COVER-TH112TK      Foam and Nylon Protective Cover

Rev. 202209231203

# TH112

## Tapped Horn Subwoofer

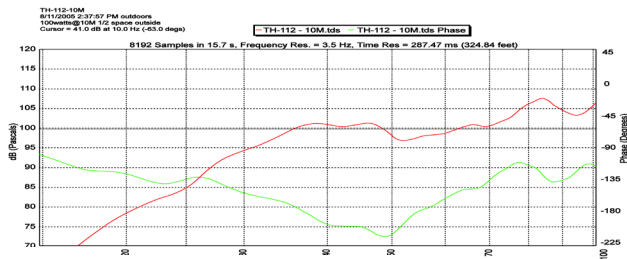


### ARCHITECT/ENGINEERS SPECS

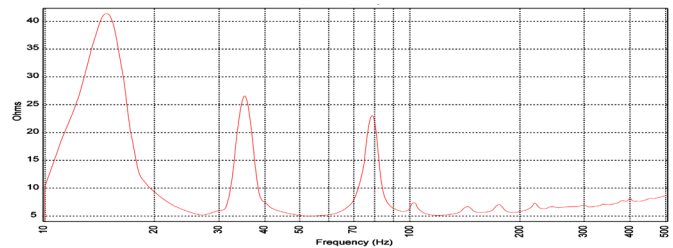
The subwoofer loudspeaker shall utilize one 12" long excursion transducer in a patent-applied enclosure. The subwoofer shall have an operating range of - 3 dB 33 Hz – 200 Hz with a sensitivity of 100 dB SPL, 107.5 dB SPL @ 84 Hz max and a maximum continuous output of 126 dB SPL/132 dB SPL peak power handling shall be 400 W continuous, 800 W program. The impedance shall be nominal 8 ohms.

The loudspeaker shall be constructed of 13 ply Baltic birch, water resistant Polyurea coated, properly braced for the intended use and a rugged steel grill. The connectors shall be Neutrik NL4. The Loudspeaker shall be the Danley Sound Labs TH112.

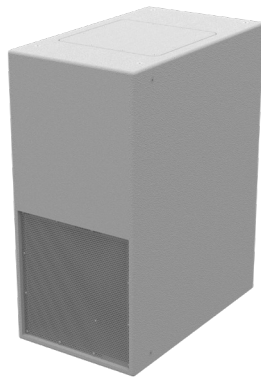
#### Sensitivity



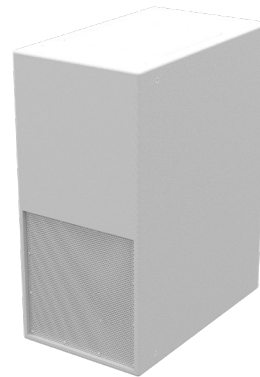
#### Impedance



TH112-I-G-EW



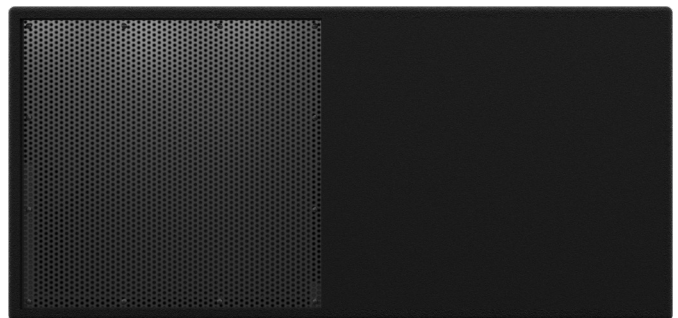
TH112-I-W



TH112-T-B



TH112-T-B



Rev. 202209231203