

# TH115

## Tapped Horn Subwoofer



The TH115 features (1) x 15" long excursion LF driver in a Tapped Horn™ alignment. The Danley Tapped Horn Subwoofer™ is a patented design which allows us to build physically small subs which are very efficient especially, at the low end of their range, and are virtually linear in their passband. The Tapped Horn™ design takes full advantage of the driver element by doubling its output ability. The result is more output from less input. Subjectively the TH series produce very deep bass from generally very small boxes.

The 13 ply Baltic Birch used throughout the enclosure is encased in PolyUrea for protection from impact and atmospheric conditions. Install and touring versions are both equipped with multiple M10 rig points. Our EW (Extreme Weather) variant offers the ultimate in protection from the elements due to the use of high-density polyurethane panels impregnated with fiberglass fibers in the place of standard plywood.

Utilize our DNA amplifiers or processor for maximum performance and protection with industry leading DSP capabilities.

### Performance Specifications

#### Operating Mode

Passive single channel amplified

#### Operating Range

38 Hz - 200 Hz -3dB

33 Hz - 280 Hz - 10dB

#### Coverage Pattern

Omni-directional

#### Transducers

1x15"

#### Power Handling

1000 W Cont. | 4000 W Peak

#### Sensitivity

measured as 2.83V @1m distance

106 dB

#### Maximum SPL

(continuous | peak)

133 dB | 139 dB      139 dB | 145 dB @100 Hz

#### M Noise

Coming soon

#### Impedance

1x4 Ohm

#### Recommended Power Amplifier

1x ≈2000 Watts @ 4 Ohm

### Physical Specifications

#### Connections (TH115-T | TH115-I)

(2) Neutrik NL4 Speakon wired in Parallel

Pin 1+/- | 4 Ohm Single Channel

Pin 2+/- | Pass Through

#### Connections (TH115-I-EW | TH115-I-AT)

1x 2 Conductor 14 Gauge Lead-in Wire

#### Mounting / Suspension Points

M10 -1.5

#### Dimensions / Weight

40 x 28.5 x 22.5 in. | 1016 x 734 x 572 mm.

157 Lbs | 67 Kg

#### Finish

Black polyurea enclosure w/ matte black grille

White polyurea enclosure w/ matte white grille

Grey UV resistant painted enclosure w/ matte grey grille

#### Enclosure Material

18mm Baltic Birch, polyurea coated

#### Options

TH115-I      Install Version

TH115-I-EW      Install Version, Extreme Weather

TH115-T      Touring Version

TH115-T-K      Touring Version w/ 3 Pole Cups

TH115-T-K-M20      Touring Version w/ 3 M20 Pole Mounts

COVER-TH15TK      Foam and Nylon Protective Cover

Rev. 202209231208

# TH115

## Tapped Horn Subwoofer



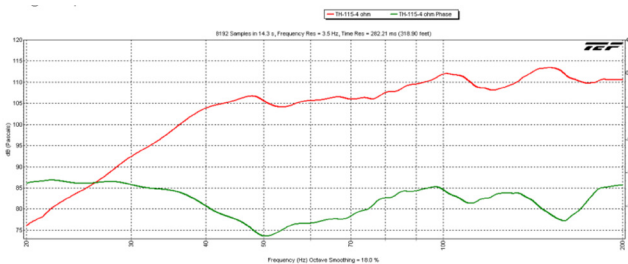
### ARCHITECT/ENGINEERS SPECS

The loudspeaker shall utilize one 15" long excursion transducer in a patent-pending enclosure. The subwoofer shall have an operating range of -3 dB 38 Hz – 200 Hz with sensitivity of 106 dB SPL, 112 dB SPL @ 100Hz.

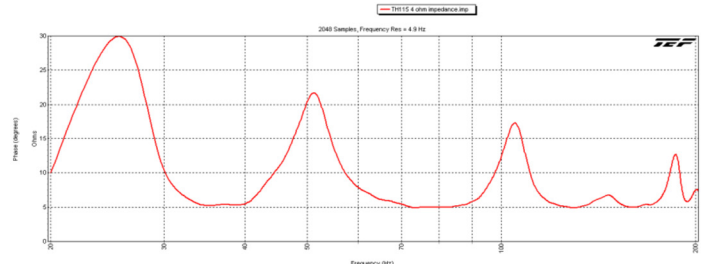
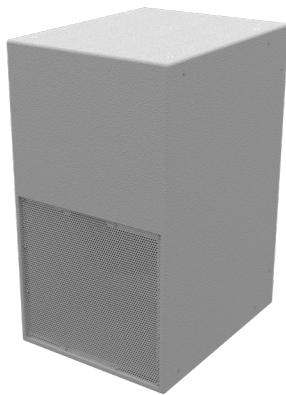
133 dB SPL/139 dB SPL peak 139 dB SPL/145 dB SPL @ 100Hz. Power handling shall be 1000 W continuous, 2000 W program. The impedance shall be nominal 4 ohms. The loudspeaker shall be constructed of 13 ply Baltic birch, water resistant Polyurea coated, properly braced for the

intended use and a rugged steel grill. The connectors shall be Neutrik NL4. The Loudspeaker shall be the Danley Sound Labs TH115.

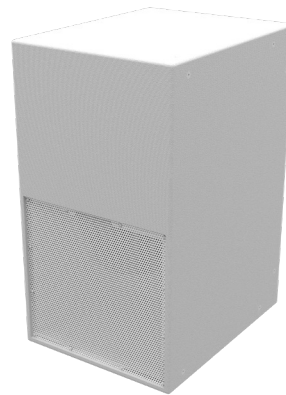
### Sensitivity



TH115-I-G-EW



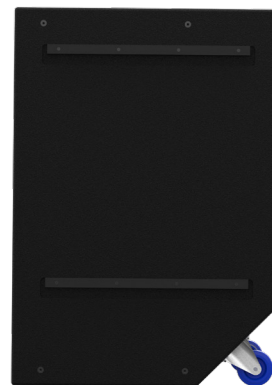
TH115-I-W



TH115-T-B



TH115-T-B



Rev. 202209231208