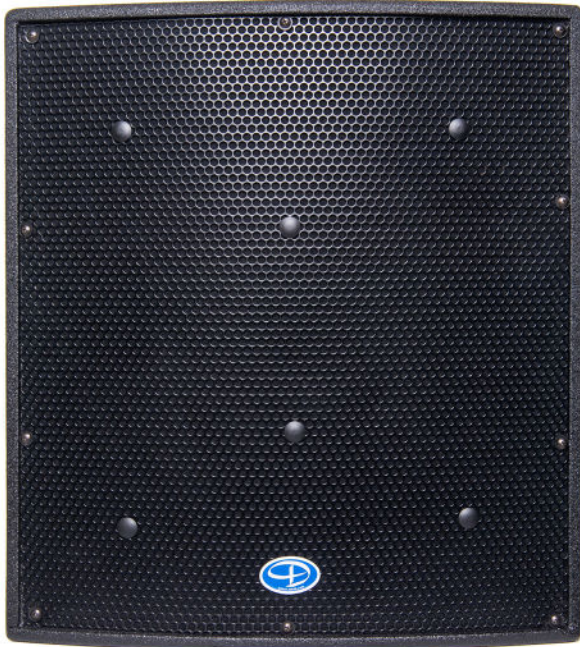


# FLX12

## 2 Way Full Range Loudspeaker



The FLX12 is a remarkable ultra-compact loudspeaker that delivers unparalleled performance, especially considering its size. It utilizes Tom Danley's patented Synergy Horn™ technology, which allows it to produce high-quality audio at levels beyond 120dB, all from a speaker weighing only 40 lbs. The FLX12 features a 12"/1.4" coaxial driver that is mated to an 90-degree conical horn, providing excellent pattern control even at low frequencies, despite its compact size.

The enclosure is constructed using 13-ply Baltic Birch, which is encased in PolyUrea to provide protection from impact and atmospheric conditions. For added convenience, the touring and installation versions of the FLX12 come equipped with M10 rig points.

In addition to its robust construction, the FLX12 comes with our Sentinel™ high and low frequency driver protection circuitry. This multistage limiter is designed to protect the high-frequency driver in the event of overloads (peaks or long term), without compromising the dynamic range during normal operation.

### Performance Specifications

#### Operating Mode

Single channel amplified two-way loudspeaker

#### Operating Range

75Hz - 21Hz +/-3dB

55Hz - >24KHz - 10dB

#### Coverage Pattern

80 Conical

#### Transducers

1x 12" Coaxial driver

#### Power Handling

300 W Cont. | 1200 W Peak

**Sensitivity** measured at 1M @ 2.83V input

94 dB

**Maximum SPL** (continuous | peak)

118 dB | 124 dB

**M Noise** (continuous | peak)

119 dB | 133 dB

#### Impedance

8 Ohm

#### Recommended Power Amplifier

400 - 800 Watts

### Physical Specifications

#### Connections (FLX12-I/FLX12-T)

(2) Neutrik NL4 Speakon wired in Parallel

Pin 1+/- | Full Range

Pin 2+/- | Pass Through

#### Mounting / Suspension Points

M10 points (FLX12-I)

#### Dimensions / Weight

13.6 x 21.5 x 18in. | 345 x 546 x 457 mm.

40 lbs | 18.Kg

#### Finish

Black polyurea coated enclosure w/ matte black grille, or

#### Enclosure Material

18mm Baltic Birch, polyurea coated

#### Options

FLX12-I      Install Version

FLX12-T      Touring Version

### Accessories

BRKT-FLX12-U      U-Bracket for the FLX12 (Wall or Ceiling)

Rev. 20230331

# FLX12

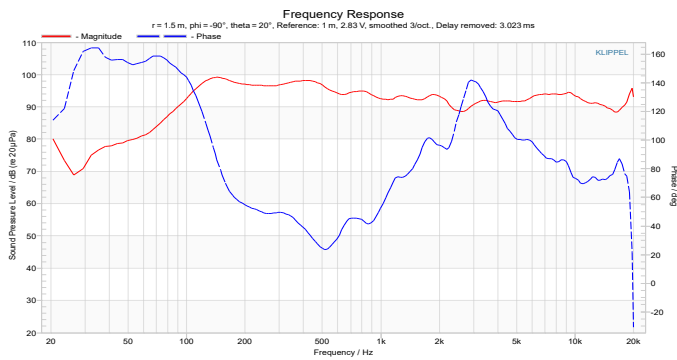
## 2 Way Full Range Loudspeaker



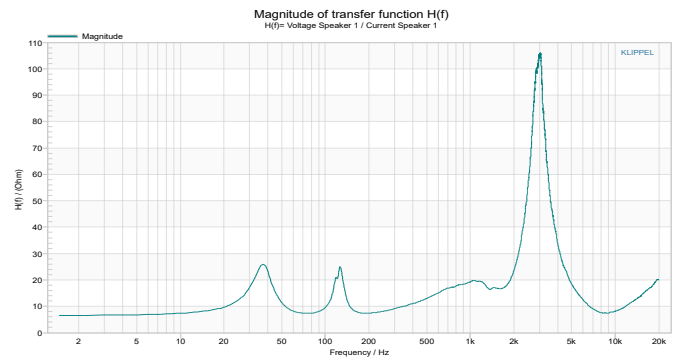
### ARCHITECT/ENGINEERS SPECS

The loudspeaker shall utilize the synergy horn enclosure. The loudspeaker shall have an operating range of 55Hz -21KHz -10dB. Sensitivity of 94 dB SPL (measured at 2.83V @1m distance). Output of 121 dB SPL Program/124 dB-SPL Peak. Power handling shall be 300 Watts cont. or 1200 Watts peak. The loudspeaker shall be constructed of 13 ply, 18mm Baltic Birch, polyurea coated. The loudspeaker shall be the Danley Sound Labs FLX12.

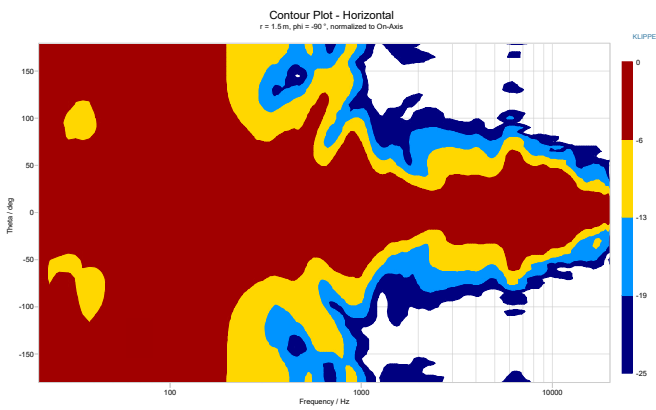
#### Sensitivity



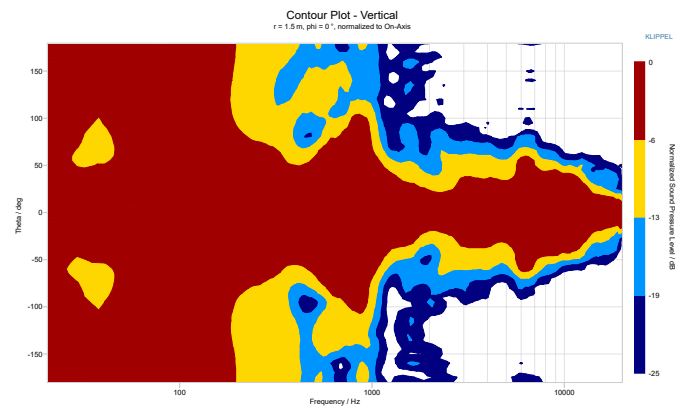
#### Impedance



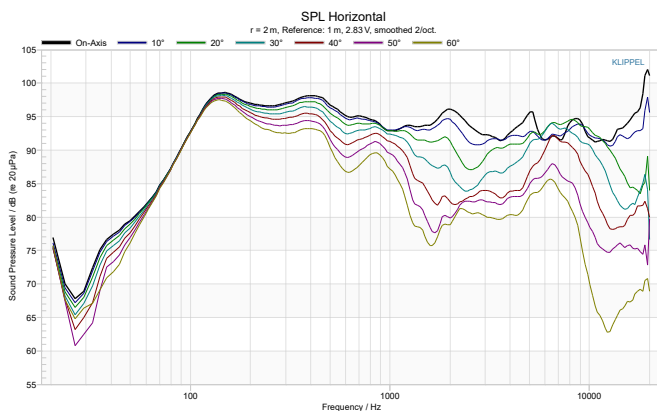
#### Horizontal Directivity Contour



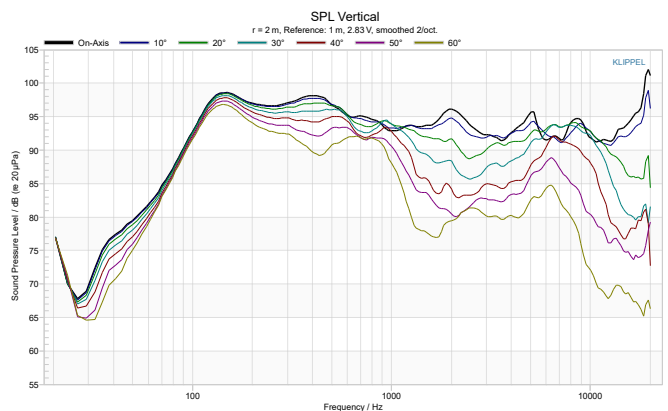
#### Vertical Directivity Contour



#### Horizontal Polar Response



#### Vertical Polar Response



Rev. 20230331