

# TDS-1

## 2 Way Full Range Studio Monitor



The Tom Danley Studio Monitor - a true work of art in audio engineering and craftsmanship. With its sleek and professional design, this monitor is a perfect fit for any professional or home studio setting.

At the heart of the monitor lies the smallest Synergy Horn in production. It delivers exceptional clarity in both high and mid-range frequencies with exceptional accuracy and detail.

The monitor's solid wood cabinetry provides not only a beautiful, natural finish but also contributes to its acoustic properties, ensuring that the sound remains true to life.

Whether you're recording and mixing music, sound designing for film, or creating podcasts, the Tom Danley Studio Monitor provides an immersive audio experience that brings your work to life. It's the perfect addition to any professional or home studio, delivering unparalleled sound quality that will inspire and elevate your creative work.

### Performance Specifications

#### Operating Mode

Single channel amplified two-way loudspeaker

#### Operating Range

63Hz - 20KHz+/-3dB

54Hz - >24KHz- 10dB

#### Coverage Pattern

120 x 120

#### Transducers

1x 5" Coaxial driver

#### Power Handling

150 W Cont. | 600 W Peak

**Sensitivity** measured as 2.83V @1m distance

84 dB

#### Maximum Linear SPL<sup>1</sup>

122.8 Z-Peak | 106.5 Z-Slow | 103.4 A-Slow | 42 Volt

#### Impedance

8 Ohm

#### Recommended Power Amplifier

150 - 300 Watts

### Physical Specifications

#### Connections (TDS-1)

Pin 1+/- | Full Range | Terminal Strip and NL4

#### Mounting / Suspension Points

(4) Points - Adaptive Technologies MM-017 and MM-018 pan/tilt brackets

#### Dimensions / Weight

15.75 x 9 x 7.75 in. | 400 x 228 x 196 mm.

15 lbs | 6.8 Kg

#### Finish

Black polyurea coated enclosure

#### Enclosure Material

18mm Baltic Birch, polyurea coated

#### Versions

TDS-1 Full Range Studio Monitor



Rev. 20230605

# TDS-1

## 2 Way Full Range Studio Monitor

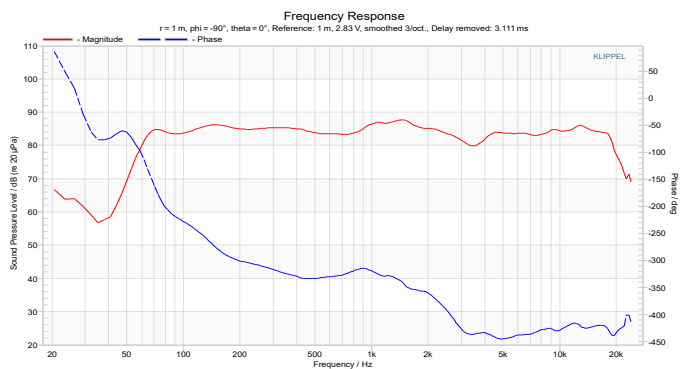


### ARCHITECT/ENGINEERS SPECS

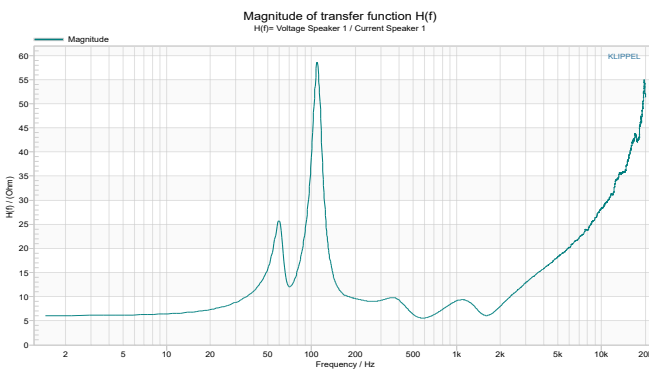
The loudspeaker shall utilize synergy horn technology. The loudspeaker shall have an operating range of 63Hz -20KHz -3dB. Sensitivity of 84 dB SPL (measured at 2.83V @1m distance). Output of 122.8 Z-Peak, 106.5 Z-Slow, 103.4 A-Slow, at 42 Volts. Power handling shall be 150 Watts cont. or 600 Watts peak. The loudspeaker shall be constructed of 18mm Baltic Birch, polyurea coated. The loudspeaker shall be the Danley Sound Labs TDS-1.

1. Maximum linear SPL AES-75: Specifies the maximum sound pressure level (SPL) a loudspeaker can produce while maintaining distortion-free operation.

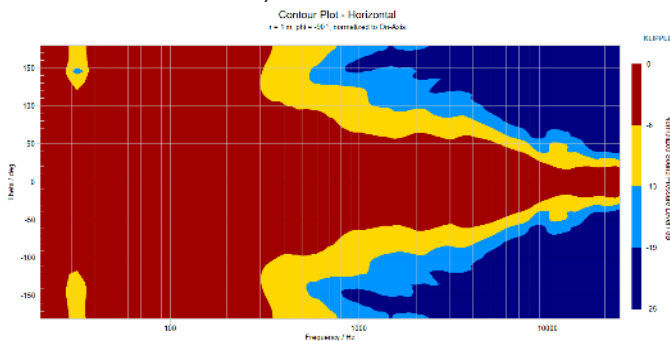
#### Sensitivity



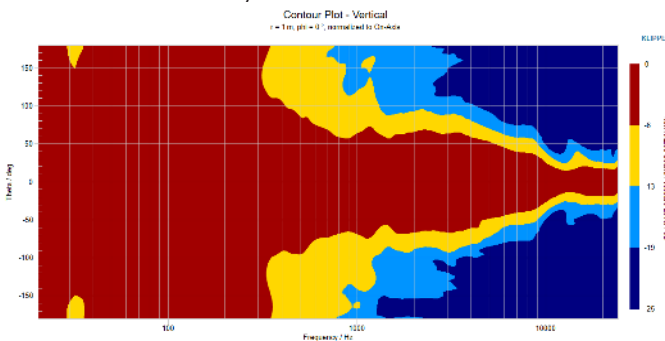
#### Impedance



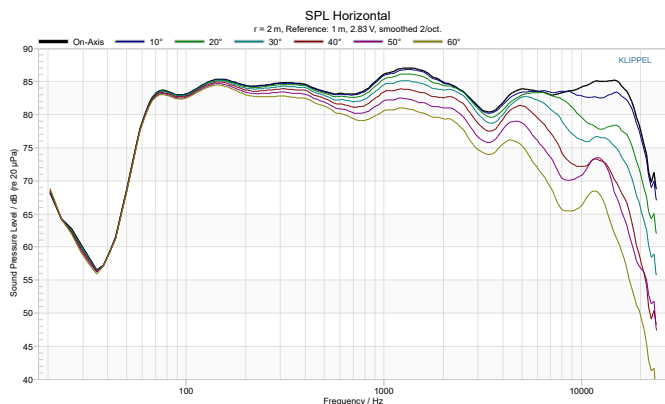
#### Horizontal Directivity Contour



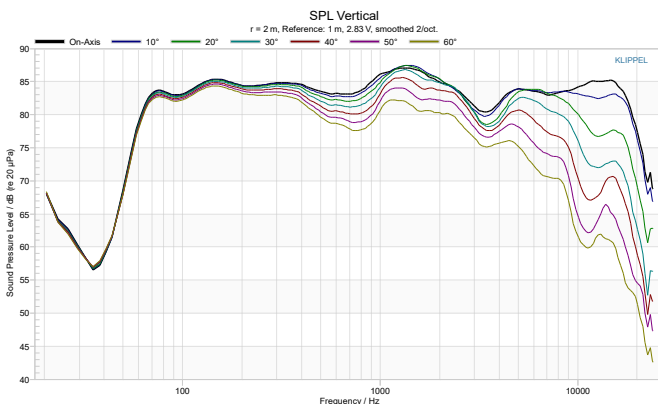
#### Vertical Directivity Contour



#### Horizontal SPL



#### Vertical SPL



Rev. 20230605