
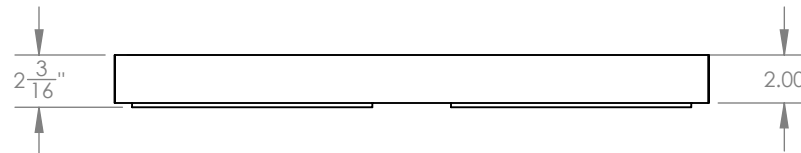
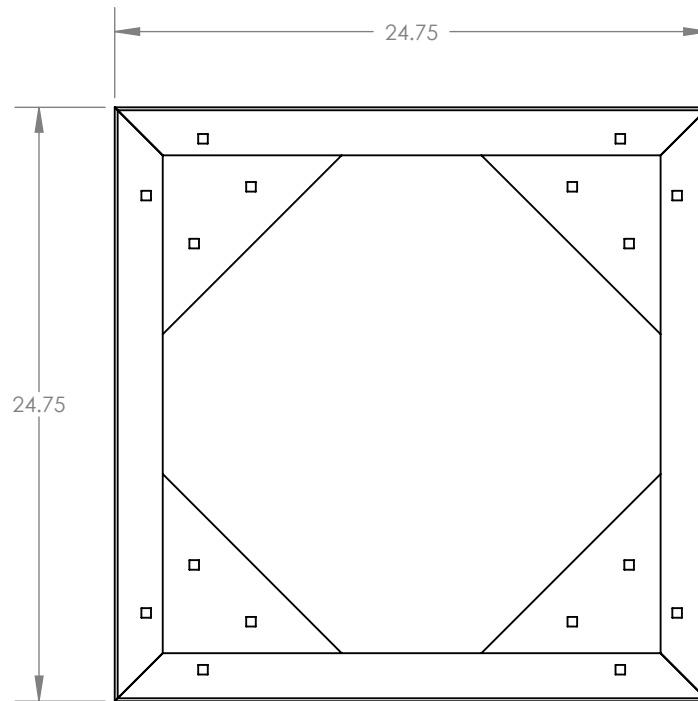



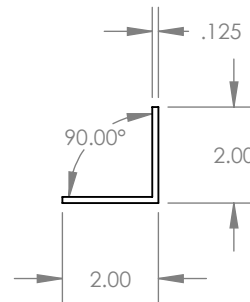
PROPRIETARY AND CONFIDENTIAL THE INFORMATION CONTAINED IN THIS DRAWING IS THE SOLE PROPERTY OF DANLEY SOUND LABS. ANY REPRODUCTION IN PART OR AS A WHOLE WITHOUT THE WRITTEN PERMISSION OF DANLEY SOUND LABS IS PROHIBITED.	MATERIAL	UNLESS OTHERWISE SPECIFIED: DIMENSIONS ARE IN INCHES TOLERANCES: FRACTIONAL ± ANGULAR: MACH ± BEND ± TWO PLACE DECIMAL ± THREE PLACE DECIMAL ±	DRAWN	CBH	7/24/2019	Danley Sound Labs			
	FINISH		ENG APPR.			TITLE:			
	DO NOT SCALE DRAWING		MFG APPR.			SIZE A		REV	
			Q.A.			SCALE:	Last Save Date: Wednesday, July 24, 2019 9:22:14 AM		
5		4			3		2		1



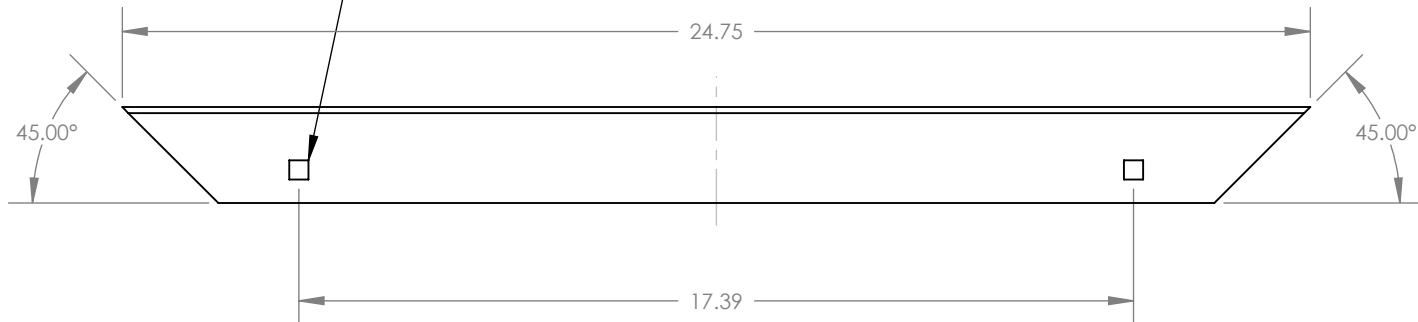
PROPRIETARY AND CONFIDENTIAL THE INFORMATION CONTAINED IN THIS DRAWING IS THE SOLE PROPERTY OF DANLEY SOUND LABS. ANY REPRODUCTION IN PART OR AS A WHOLE WITHOUT THE WRITTEN PERMISSION OF DANLEY SOUND LABS IS PROHIBITED.	MATERIAL	UNLESS OTHERWISE SPECIFIED: DIMENSIONS ARE IN INCHES TOLERANCES: FRACTIONAL ± ANGULAR: MACH ± BEND ± TWO PLACE DECIMAL ± THREE PLACE DECIMAL ±	DRAWN	CBH	7/24/2019	Danley Sound Labs		
	FINISH		ENG APPR.			TITLE: Overall Dolly Dimensions		
	DO NOT SCALE DRAWING		MFG APPR.			SIZE A		REV: 1
			Q.A.			SCALE: 1:8	Last Save Date: Wednesday, July 24, 2019 9:22:14 AM	
5		↑	4		3	2		1


Note: (4) Arms per assembly

Material: 2x2x1/8" Angle Iron



.4x.4" Square Hole, Two Places
For 3/8" Carriage Bolt



PROPRIETARY AND CONFIDENTIAL THE INFORMATION CONTAINED IN THIS DRAWING IS THE SOLE PROPERTY OF DANLEY SOUND LABS. ANY REPRODUCTION IN PART OR AS A WHOLE WITHOUT THE WRITTEN PERMISSION OF DANLEY SOUND LABS IS PROHIBITED.	MATERIAL	UNLESS OTHERWISE SPECIFIED: DIMENSIONS ARE IN INCHES TOLERANCES: FRACTIONAL ± ANGULAR: MACH ± BEND ± TWO PLACE DECIMAL ± THREE PLACE DECIMAL ±	DRAWN	CBH	7/24/2019	Danley Sound Labs		
	FINISH		ENG APPR.			TITLE: J7 Dolly Arm		
	DO NOT SCALE DRAWING		MFG APPR.			SIZE A		REV: 1
			Q.A.			SCALE: 1:4	Last Save Date: Wednesday, July 24, 2019 9:22:14 AM	
5		↑	4		3	2		1

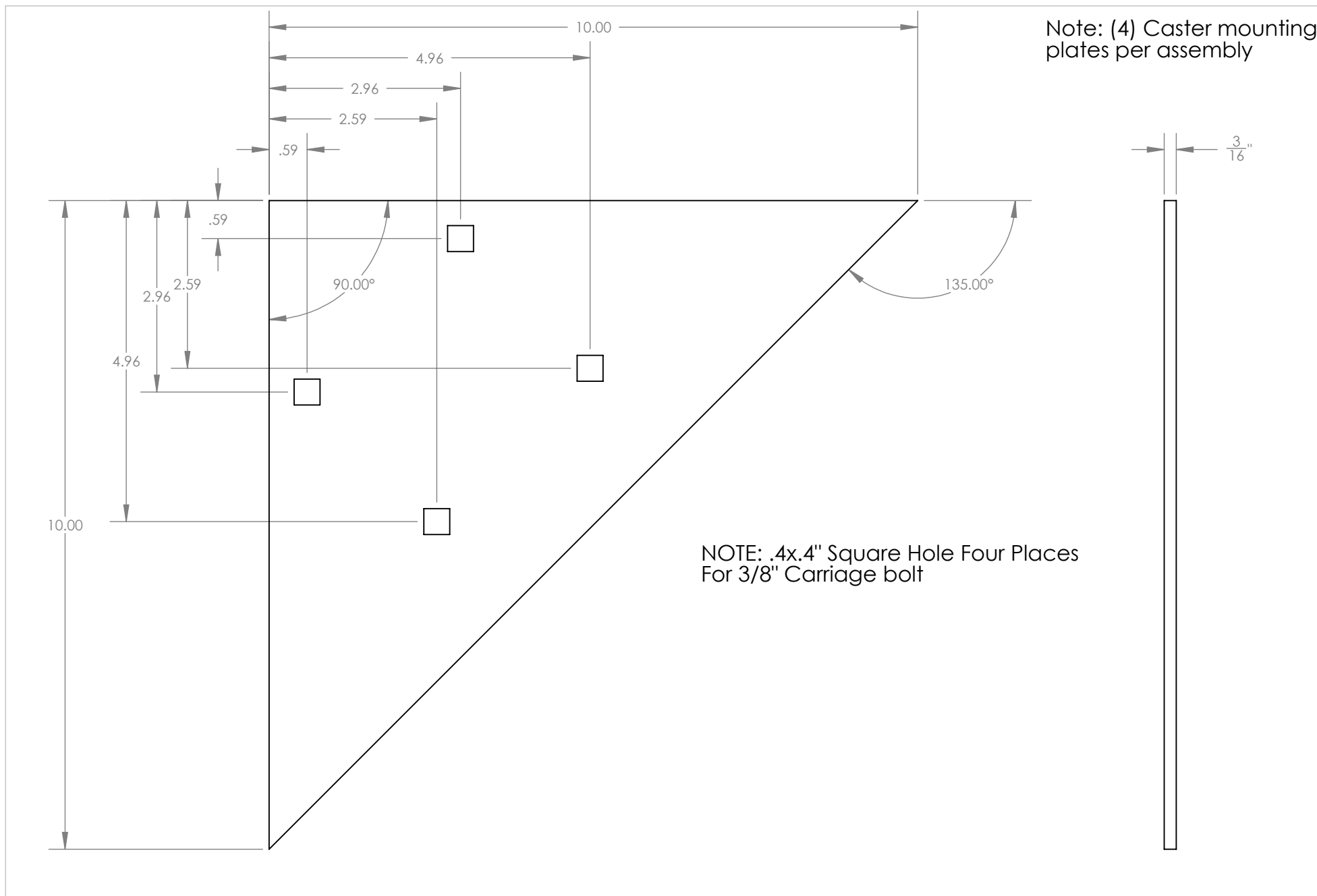
5


4

3

2

1



<div>PROPRIETARY AND CONFIDENTIAL</div> <div>THE INFORMATION CONTAINED IN THIS DRAWING IS THE SOLE PROPERTY OF DANLEY SOUND LABS. ANY REPRODUCTION IN PART OR AS A WHOLE WITHOUT THE WRITTEN PERMISSION OF DANLEY SOUND LABS IS PROHIBITED.</div>	MATERIAL	<div>UNLESS OTHERWISE SPECIFIED:</div> <div>DIMENSIONS ARE IN INCHES</div> <div>TOLERANCES:</div> <div>FRACTIONAL ±</div> <div>ANGULAR: MACH ± BEND ±</div> <div>TWO PLACE DECIMAL ±</div> <div>THREE PLACE DECIMAL ±</div>	DRAWN	CBH	7/24/2019	Danley Sound Labs		
	FINISH		ENG APPR.			TITLE: Caster Mounting Plate		
	DO NOT SCALE DRAWING		MFG APPR.			SIZE A		REV: 1
			Q.A.			SCALE: 1:2	Last Save Date: Wednesday, July 24, 2019 9:22:14 AM	
5		4		3		2		1