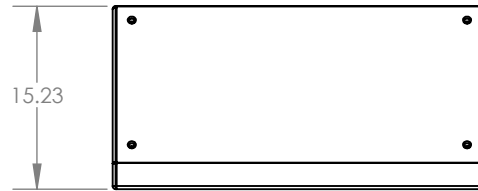


- = Attachment Point Symbol
- ⊙ = Center of Gravity Symbol (To Be Determined)

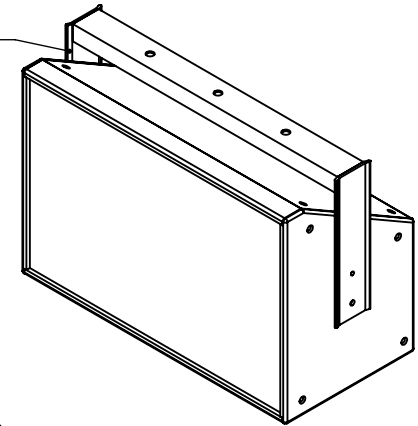
# Attachment Points:

M10-1.5 Thread  
 (4) on Top  
 (4) on Bottom  
 (4) on Left Side  
 (4) on Right Side  
 (1) on Back  
 (1) Yoke Point Left Side  
 (1) Yoke Point Right Side



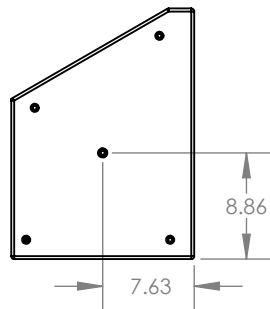
Top View

Optional U Bracket

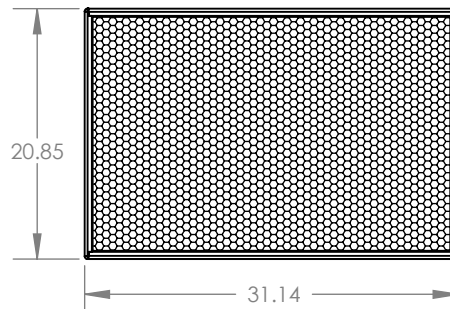


Attachment Point:  
M10-1.5 17 Places

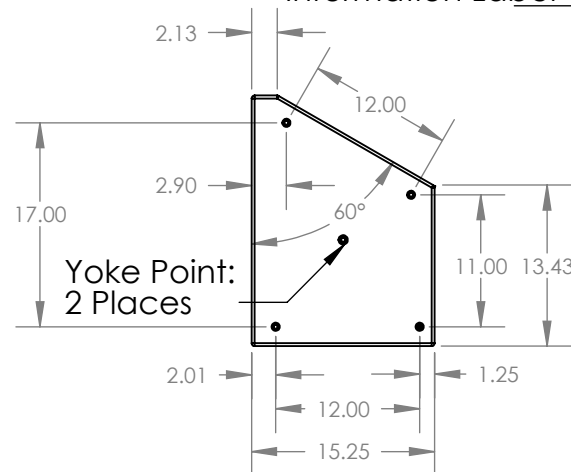
Information Label



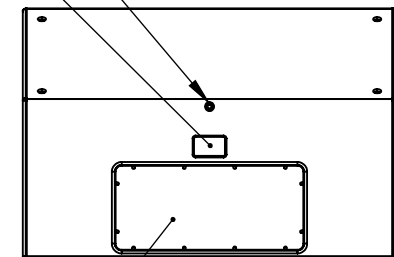
Left View



Front View

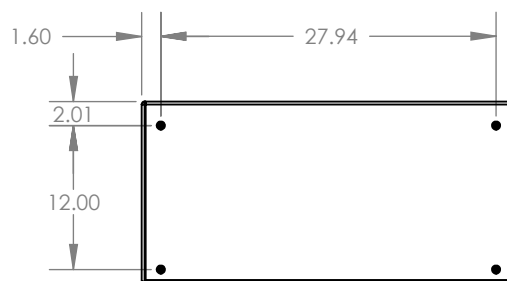


Right View



Back View

Power Amp  
(or)  
NL4: 2 Places



Bottom View

**PROPRIETARY AND CONFIDENTIAL**  
 THE INFORMATION CONTAINED IN THIS  
 DRAWING IS THE SOLE PROPERTY OF  
 QUALITY MUSICAL SYSTEMS, INC. ANY  
 REPRODUCTION IN PART OR AS A WHOLE  
 WITHOUT THE WRITTEN PERMISSION OF  
 QUALITY MUSICAL SYSTEMS, INC. IS  
 PROHIBITED.

MATERIAL  
 FINISH  
 DO NOT SCALE DRAWING

UNLESS OTHERWISE SPECIFIED:  
 DIMENSIONS ARE IN INCHES  
 TOLERANCES:  
 FRACTIONAL ±  
 ANGULAR: MACH ± BEND ±  
 TWO PLACE DECIMAL ±  
 THREE PLACE DECIMAL ±

DRAWN TBW 7/24/2014  
 ENG APPR.  
 MFG APPR.  
 Q.A.

Danley Sound Labs

TITLE: SM96I (Install)

SIZE A Plan View

SCALE: 1:12

Last Save Date: Thursday, July 24, 2014 3:10:08 PM



REV 1